

CHD4-[PHD] (His)

CATALOG NO.: RD-11-467

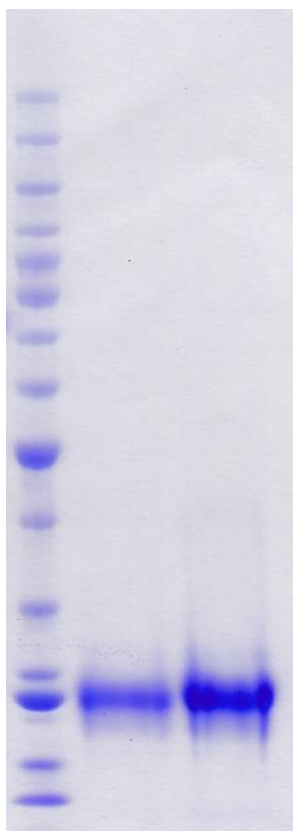
LOT NO.:

DESCRIPTION: Human recombinant CHD4-[PHD] (residues 367-501; Genbank Accession # NM_001273.3; MW = 16.7 kDa) expressed as a C-terminal His-tag protein in *E. coli*.

PURITY: >95% by SDS-PAGE

SUPPLIED AS: $_ \mu\text{g}/\mu\text{L}$ in 50 mM Tris HCl, pH 7.5, 500 mM NaCl, 1 mM TCEP, 10% glycerol as determined by OD₂₈₀.

STORAGE: -70°C. Thaw quickly and store on ice before use. The remaining, unused, undiluted protein should be snap frozen, for example in a dry ice/ethanol bath or liquid nitrogen. Minimize freeze/thaws if possible, but very low volume aliquots (<5 μl) or storage of diluted enzyme is not recommended.



Coomassie blue-stained SDS-PAGE (4-12% acrylamide) of 4 and 10 μg of RBC CHD4-[PHD] (His). MW markers (right) are, from top, 220, 160, 120, 100, 90, 80, 70, 60, 50, 40, 30, 25, 20, 15, 10 kDa.

This product is not intended for therapeutic or diagnostic use in animals or in humans.

Reaction Biology

1 Great Valley Parkway, Malvern PA, USA 19355

requests@reactionbiology.com www.reactionbiology.com